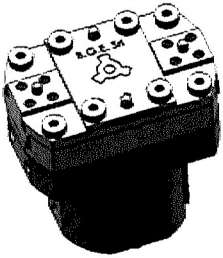
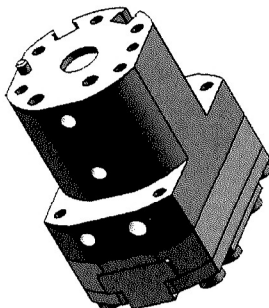
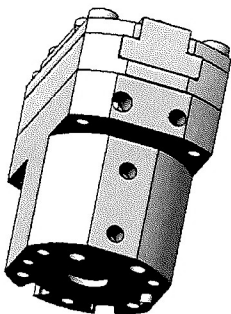
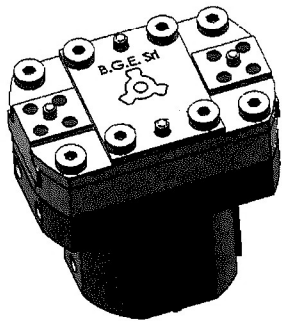


MA2P40C20

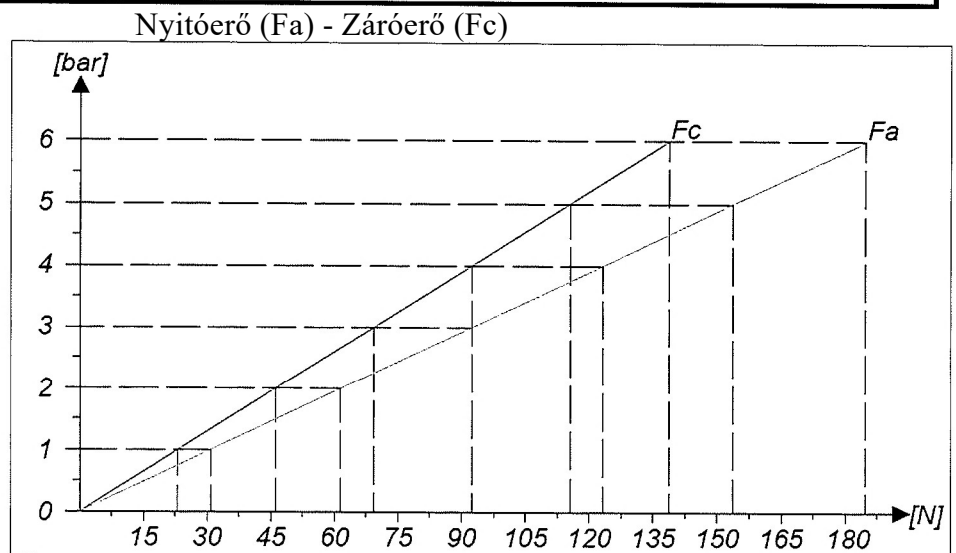


Műszaki jellemzők / SPECIFICATIONS / DATI TECNICI						
GRIPPER WEIGHT Peso della pinza	önsúly	0,5 [Kg]		OPENING PRESSURE Alimentazione di apertura	zárás	6 [bar]
CLAMPING FORCE (6 bar) Forza di chiusura (6 bar)	záróerő	138 [N]		CLOSING PRESSURE Alimentazione di chiusura	nyitás	6 [bar]
STROKE PER JAW Corsa per griffa	löket / pofa	10 [mm]		COOLING Raffreddamento	hűtés	0,5 + 2 [bar]
OPENING GRIPPER Pinza aperta	nyitott fogó	78 [mm]		PRESSURIZATION Pressurizzazione	túlnyomás	0,5+1 [bar]
CLOSING GRIPPER Pinza chiusa	zárt fogó	58 [mm]	MA = GRIPPER - Pinza 2 = NR OF JAW - Nr di griffe P = PNEUMATIC - Pneumatica 40 = Ø GRIPPER - Ø Pinza C = STROKE - Corsa 20 = mm OF STROKE - mm di Corsa	LUBRICATION Lubrificazione	kenés	1+5 [bar]
JOB TEMPERATURE Temperatura di lavoro	üzemi hőmérséklet	-5° ÷ + 50° [°C]		PIECE WEIGHT (suggestions) Peso del pezzo (consigliato)	javasolt darabsúly	0,69 [Kg]

Under different conditions, please contact our Technical department In condizioni diverse contattare il nostro Ufficio tecnico
 Különleges üzemi körülmények esetén hívja műszaki kollégáinkat tel.: +36 1 200 2822



FORZA DI APERTURA (Fa) - FORZA DI CHIUSURA (Fc)
 OPENING FORCE (Fa) - CLOSING FORCE (Fc)



LUNGHEZZA CHELE
 FINGERS DIMENSION

